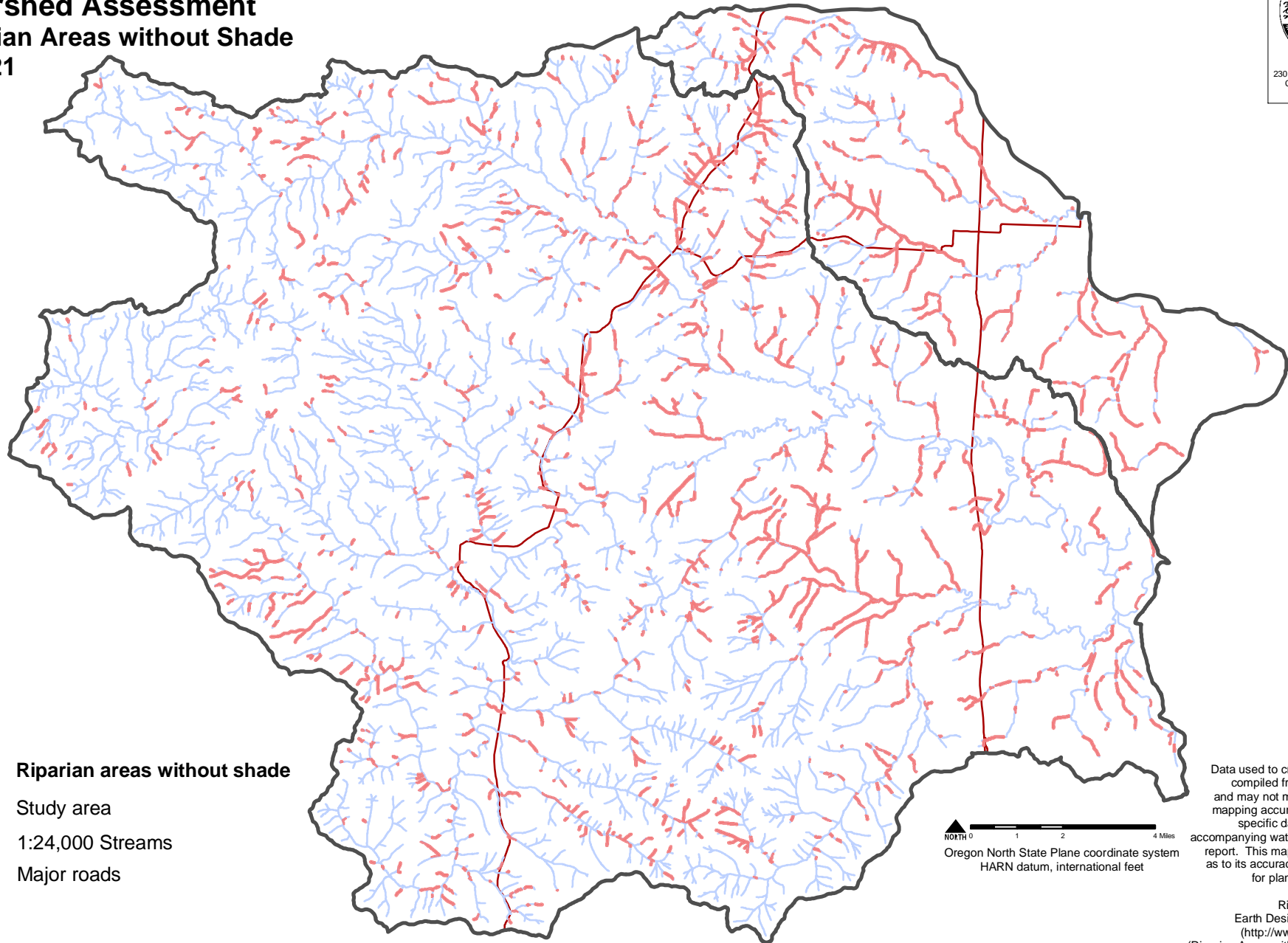




**Luckiamute/Ash Creek/American Bottom  
Watershed Assessment  
Riparian Areas without Shade  
Map 21**



230 SW Third Street, Suite 212  
Corvallis, Oregon 97333  
www.earthdesign.com



-  Riparian areas without shade
-  Study area
-  1:24,000 Streams
-  Major roads

 NORTH  
0 1 2 4 Miles  
Oregon North State Plane coordinate system  
HARN datum, international feet

Data used to create this map were compiled from multiple sources and may not meet federal or state mapping accuracy standards. For specific data sources see the accompanying watershed assessment report. This map has no warranties as to its accuracy and is to be used for planning purposes only.

Riparian Data Source:  
Earth Design Consultants, Inc.  
(<http://www.earthdesign.com>)  
(Riparian Areas without Shade includes the following classes: bare, herbaceous, developed and water)